

## **EGGER OSB BARN LINING**

### **DESIGN & INSTALLATION GUIDE**



TABLE OF CONTENTS	PAGE
<b>1. PURPOSE OF DOCUMENT</b> .....	<b>2</b>
1.1 General .....	2
1.2 Supporting information .....	2
1.3 EGGER OSB Barn Lining .....	2
<b>2. SCOPE OF USE &amp; LIMITATIONS</b> .....	<b>2</b>
2.1 Where can EGGER OSB Barn Lining be used? ..	2
2.2 Limitations when using EGGER OSB Barn Lining .....	3
<b>3. DESIGNER INFORMATION</b> .....	<b>3</b>
3.1 Skill level.....	3
3.2 Design considerations .....	3
<b>4. INSTALLATION INFORMATION</b> .....	<b>3</b>
4.1 Skill level .....	3
4.2 Health and safety .....	3
4.3 Handling and storage .....	3
4.4 Tools.....	3
4.5 Ancillary products.....	3
4.6 Installing the panels .....	4
4.6.1 Substrate preparation .....	4
4.6.2 Laying the panels .....	4
4.6.3 Fixings.....	4
4.6.4 Finishing the floor panels .....	4

## 1. PURPOSE OF DOCUMENT

### 1.1 GENERAL

This document is intended for designers and installers to ensure that EGGER OSB Barn Lining is specified and installed correctly.

### 1.2 SUPPORTING INFORMATION

This document must be read in conjunction with the:

- IBS **pass™** for EGGER OSB Barn Lining
- IBS Product Specification for EGGER OSB Barn Lining
- IBS Maintenance and Warranty for EGGER OSB Barn Lining

### 1.3 EGGER OSB BARN LINING

**EGGER OSB Barn Lining** is an OSB/3 panel manufactured by EGGER in accordance with EN13986:2004. OSB/3 is defined as suitable for use as a load-bearing panel in humid conditions.

IBS supplies the EGGER OSB Barn Lining for use:

- As wall and ceiling lining
- It may be overlaid with any self-supporting product.

#### Panel sizes are as follows:

- 2400 mm x 1200 mm x 9 mm
- 2500 mm x 1250 mm x 9 mm

## 2. SCOPE OF USE & LIMITATIONS

### 2.1 WHERE CAN EGGER OSB BARN LINING BE USED?

EGGER OSB Barn Lining is suitable for internal use only. It has a wide range of uses including:

- Wall linings
- Hoardings
- Roof sarking
- Custom furniture
- Packaging
- Craft applications

It is suitable as a wall and ceiling lining and sarking in all steel and wood framed buildings:

- That comply with the NZ Building Code
- In existing buildings, where the designer and installer have satisfied themselves that the existing building is suitable for the intended building work
- Can be used as a wall lining that provides a bracing value

**EGGER OSB Barn Lining** may be installed vertically or horizontally.







## 2.2 LIMITATIONS WHEN USING EGGER OSB BARN LINING

- Prior to installation of the EGGER OSB Barn Lining, the timber framing moisture content should be no greater than 18%MC.
- Where EGGER OSB Barn Lining is used in wet areas or areas likely to be splashed, a waterproof membrane system or impervious coating must be applied.
- **EGGER OSB Barn Lining** is not suitable for external use or in locations exposed to high humidity and/or moisture.
- Where overlaying EGGER OSB Barn Lining over in-situ concrete or concrete masonry, battens on DPC must be used.
- **EGGER OSB Barn Lining** should not be left in its raw state and must be finished with a protective coating.

## 3. DESIGNER INFORMATION

### 3.1 SKILL LEVEL

Where EGGER Barn Lining is specified by a designer, the designer shall have the appropriate skills, knowledge of the product and access to all EGGER OSB Barn Lining technical information (refer [www.ibs.co.nz](http://www.ibs.co.nz)).

### 3.2 DESIGN CONSIDERATIONS

The designer is responsible for considering the following in their design when specifying EGGER OSB Barn Lining :

1. The use of the building
2. The use of the space in respect to fire, water splash, moisture and/or acoustics
3. The supporting structure
4. Specified scope and limitations

## 4. INSTALLATION INFORMATION

### 4.1 SKILL LEVEL

The installer will need to have knowledge of basic carpentry skills, knowledge of the product and access to all EGGER OSB Barn Lining technical information (refer [www.ibs.co.nz](http://www.ibs.co.nz)).

### 4.2 HEALTH AND SAFETY

When installing EGGER OSB Barn Lining take all steps to ensure your safety and the safety of others.

- Use safety glasses, ear protection, and wear appropriate clothing and footwear.
- Use all tools in accordance with the relevant instruction manuals.
- Ensure drilling and cutting is carried out in a well-lit, well ventilated room.
- Provide for dust extraction if working in an enclosed space.

**For further information refer to:**

- [The Absolutely Essential Health and Safety Toolkit](#)
- [Worksafe New Zealand Quick Guide](#)

## 4.3 HANDLING AND STORAGE

When the panels arrive:

- Remove the fixing strips to reduce the stress on the panels and store them flat.
- Limit the time they are stored outside, however, where stored outside:
  - Keep away from water or vegetation
  - Raise off the ground
  - Cover the panels with weatherproof coverings, but still allow ventilation

### IMPORTANT NOTE:

Before installing, store the panels inside for 48 hours to acclimatise to the installation site moisture level.

## 4.4. TOOLS

When installing EGGER OSB Barn Lining the following tools and fixings are required, but not limited to:

- Hard tipped handsaw
- Skill saw with tungsten tipped blade
- Electric drill with holes saw and high speed drill bits
- Block of wood for tapping panels into place
- Hammer and/or screwdriver

## 4.5 ANCILLARY PRODUCTS

### Nails must:

- be a minimum length of 30 mm. Not smooth shank nails
- be 3.0 mm minimum diameter- spiral, ring or grooved nails
- be 50 x 2.55 mm jolt head galv nails for bracing

### Staples must:

- be a minimum gauge of 1.53 mm, length 50 mm and width 11 mm.
- be directed at a minimum 30° angle against the panel surface
- be placed at minimum 300 mm spacing

### Screws must:

- have a minimum length of 30 mm
- be self-tapping wood-screws with countersunk head
- have a minimum diameter of 3.5 mm

**NOTE:** Mild steel or light zinc coated fixings can be used, however this is not recommended where the panel is exposed to the elements or where a visual finish is required. In these instances stainless steel fixings are recommended.

### 4.6 INSTALLING THE PANELS

#### 4.6.1. SUBSTRATE PREPARATION

- Ensure that all framing is clean and dry
- Ensure the board has been acclimatised inside for 48 hours
- Ensure that the framing has an EMC no greater than 18%

#### 4.6.2. LAYING THE PANELS

- Fasten at the perimeter outer studs at 150 mm fixing spacing.
- Where a cc-span is at 450 mm, fixing at no greater than 300 mm is sufficient.
- Screws should be a minimum distance of 9 mm from the panel edge.
- Stud spacing's of 450 mm – 600 mm centres for horizontal installation or 600 mm centres for vertical installation.

#### HORIZONTAL INSTALLATION

For walls, higher than 5 m all panel joints must be supported by studs and nogs.

#### VERTICAL INSTALLATION

For vertical applications, the EGGER OSB Barn Lining requires one vertical row of fixings at 300 mm centres through the supporting stud.

#### 4.6.3. FIXINGS

The following is recommended:

	Maximum fastener spacing		Maximum fastener spacing from board's edge	
	Centers at edges (on board's perimeter)	Centers at the intermediate supports	Centers at the intermediate supports	Centers at the intermediate supports
Nails/screws	150 mm	300 mm	10 mm	25 mm
Staples	75 mm	150 mm	20 mm	25 mm

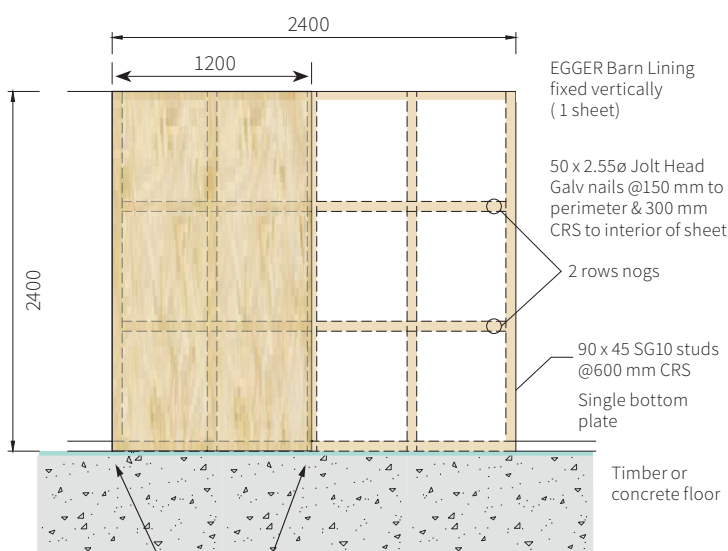
#### 4.6.4 WALL BRACING

**EGGER OSB Barn Lining** can be installed as a wall bracing element with the following:

- Top and bottom plates - 90 x 45, SG10
- Studs - 90 x 45, SG10 @ max 600 mm centres
- Bottom plate - use GIB®HandiBrac brackets with M12 hold-down bolts
- Fixings - 50 x 2.55ø galvanised jolt head nails @ 150 mm to perimeter and 300 mm CRS to interior of sheet
- 2 rows of horizontal nogs

EGGER BARN LINING BRACING TABLE: 1200 x 2400

BU Wind	90 (75 BU/m) ULC
BU Earthquake	71 (59 BU/m) ULC



GIB® HandiBrac installed in the internal corners, with M12 Hold Down bolts

#### 4.6.5. FINISHING THE PANELS

Once installed it is not intended to be left in its raw state. EGGER OSB Barn Lining is required to be sealed or overlaid with an appropriate protective covering such as paint or a membrane system compatible with a composite timber.

Where the panels are used in areas prone to water splash, a waterproof membrane or impervious covering must be used.

## NOTES

### CERTIFICATION HELD BY EGGER

- DIN EN 13986:2004 issued by Fraunhofer
- ISO9001:2008 issued by **qualityaustria**

### USEFUL LINKS

For compliance information of EGGER OSB Barn Lining:

- IBS **pass™**  
(Product Assurance Supplier Statement)

Information to help with the design and specification of EGGER OSB Barn Lining:

- IBS Product Specification
- IBS Design & Installation Guide

For the DIYer refer to:

- IBS Home Builder Info Sheet

Information to help with the maintenance of EGGER OSB Barn Lining refer to:

- IBS Maintenance

Our warranty for IBS supplied EGGER OSB Barn Lining refer to:

- IBS Warranty



### ABOUT IBS

**Independent Building Supplies (IBS)** has been distributing panel products around New Zealand since 1993. Our focus is on sourcing the best panel products available from around the world from sustainable renewable resources. IBS products are supported by full technical literature and support providing our customers with the **Best Products**, the **Best Service**, and the **Best Experience**.



1/7 Fraser Road, Panmure Auckland | P: 0800 367 759

[www.ibs.co.nz](http://www.ibs.co.nz)