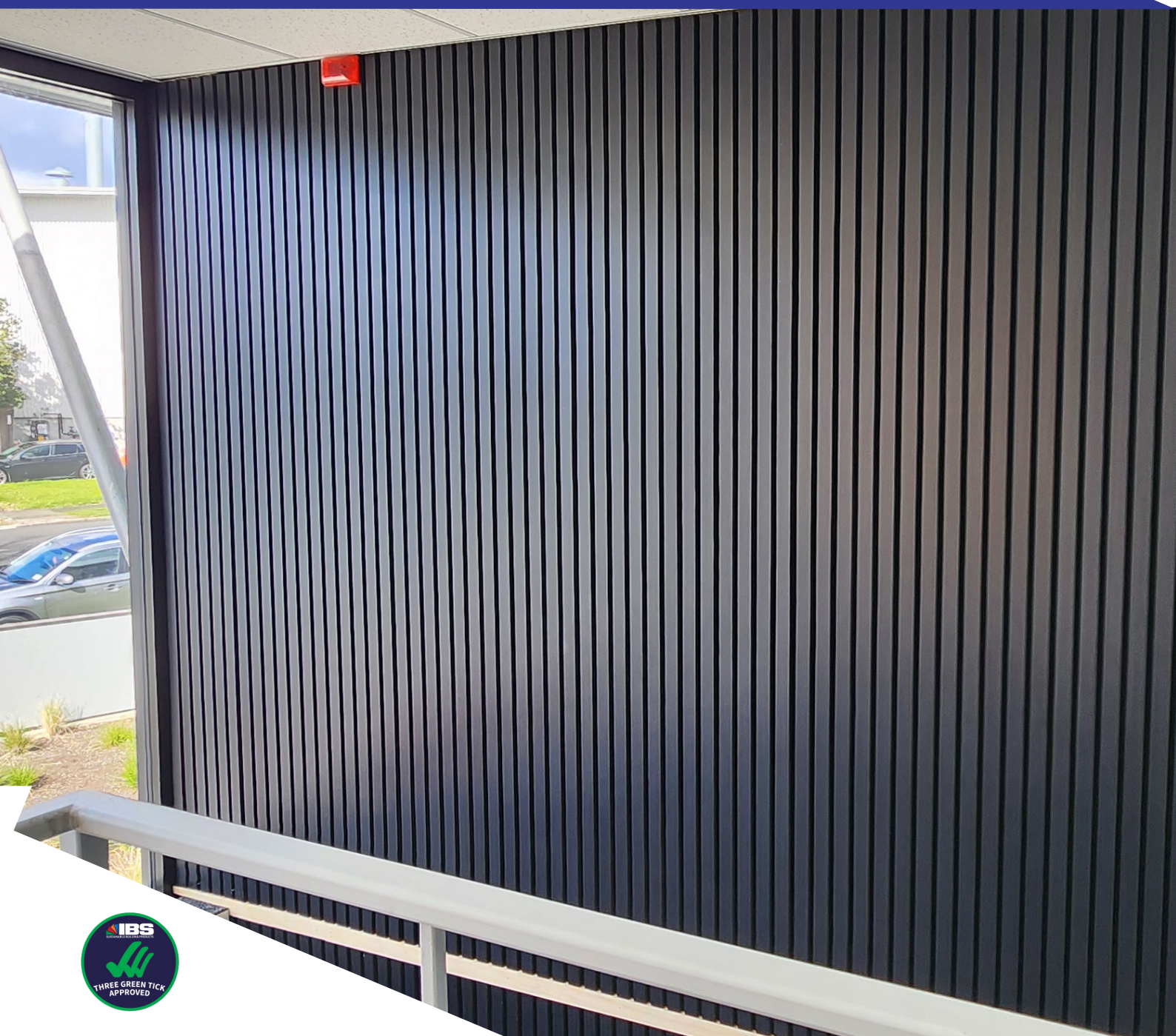


Design & Installation Guide

IBS Acoustic Timber Slat Panel



September 2024



Contents

1. Introduction

1.1	What is IBS Acoustic Slat Panel?	4
1.2	IBS Acoustic Slat Panel Intended Use	5
1.3	Supporting information	5

2. Best Practice

2.1	Designer/Installer Skill Level	6
2.2	Health and Safety	6
2.3	Tools	6
2.4	Sawing, Drilling, Shaping	7
2.5	Handling and Storage	7
2.6	Quality Assurance	7

3. Durability

3.1	Handling & Storage	8
3.2	Prohibited uses	8
3.3	Defects	8
3.4	Differing Installation	8

4. Installtion

4.1	Cutting	9
4.2	Installation	10
4.3	Fixing	11
4.4	Fixing Spacing	11
4.5	Types of Fasteners/ Adhesives options	11
4.6	Differeing Installation	11

5. Finishing

5.1	Finishing the Panels	12
-----	----------------------	----

6.	Care, Maintenance & Warranty	
6.1	Scope of Use	12
7.	Technical Properties	
7.1	Acoustic Information	13
8.	Additional Resources	
8.1	Additional Information	15
9.	Limitations	14
10.	Frequently Asked Questions	14
11.	Installation Check List	15

NZBN 9429000097253

IBS Acoustic Slat Panel Product Details				
Colour	L x W x Thickness (mm)	Weight (kg)	IBS Product Code	GTIN
Black	2400 x 600 x 21	11.5	AWP21246B	09421036230345
White Oak	2400 x 600 x 21	11.5	AWP21246W	09421036230338
Black	600 x 600 x 21	2.8	AWP216B	09421036230314
White Oak	600 x 600 x 21	2.8	AWP216W	09421036230321

Contact us for more information or to talk to our team.
www.ibs.co.nz 0800 367 759 info@ibs.co.nz

1. Introduction

This document is intended for designers and installers to ensure that IBS Acoustic Slat Panels is specified and installed correctly.

1.1 What is an IBS Acoustic Slat Panel?

Elevate the ambiance of your interiors with the sophisticated charm of IBS Acoustic Slat Panels. These panels are not just a visual treat but also an acoustic benefit, featuring a dual-layered design that marries the natural elegance of wooden veneer slats with the innovative functionality of acoustic felt backing. The result is a product that not only enhances the aesthetic of your space but also improves its sound quality, making it perfect for creating a serene and inviting atmosphere in your home or office.

The IBS Acoustic Slat Panels are a testament to modern design, offering a sleek and contemporary look that can transform walls and ceilings into works of art. The wooden slats provide a touch of organic warmth, while the acoustic felt backing ensures that your spaces remain peaceful and noise-free. Whether you're looking to add character to your living room, bring tranquility to your bedroom, or infuse your office with a sense of calm, these panels are up to the task.

Installation is a breeze, with a user-friendly DIY setup that allows you to bring this transformative product into your space with ease. The panels are versatile and adaptable, fitting seamlessly into various rooms, from hallways to dining areas, kitchens, and beyond. With IBS Acoustic Slat Panels, you have the freedom to customize your environment to suit your aesthetic and functional needs.

For those seeking to upgrade their existing walls and ceilings, IBS Acoustic Slat Panels offer a simple yet impactful solution. They are more than just a decorative element; they are a statement of style and a commitment to quality living. Choose IBS Acoustic Slat Panels for a harmonious blend of design and utility, and watch as your spaces come alive with newfound vibrancy and life.

1.2 IBS Acoustic Slat Panel Intended Use

Transform your spaces into acoustic havens with the versatile IBS Acoustic Slat Panels. These panels are designed to enhance the auditory and visual appeal of any room, making them ideal for use in hallways, lounge rooms, dining rooms, kitchens, bedrooms, and offices. The IBS Timber Slat Acoustic Panels are not just for aesthetic enhancement; they serve a practical purpose by covering existing walls and ceilings, providing a layer of sound dampening and a touch of modern elegance.

Crafted for functionality and style, these panels are a perfect match for those looking to infuse their environments with a serene and sophisticated atmosphere. However, it's important to note that while they are a fantastic addition to most spaces, there are certain areas where they may not be suitable. To maintain the integrity and longevity of the panels, it is advised to avoid installing them in damp areas or places where they might come into contact with water. This precaution helps to preserve the quality and appearance of the panels over time.

Additionally, when considering the placement of IBS Acoustic Slat Panels, it is best to keep them away from open flames. Areas such as cooking spaces or near fireplaces should be avoided to prevent any potential damage from heat or fire. By following these simple guidelines, you can ensure that your IBS Acoustic Slat Panels remain a beautiful and functional part of your decor for years to come.

1.3 Supporting Information

This document must be read in conjunction with the:

- IBS Care & Maintenance and Warranty for IBS Acoustic Slat Panels

All other information including any updates are available at www.ibs.co.nz.

2. Best Practice

2.1 Designer/Installer Skill Level

Where IBS Acoustic Slat Panels is specified and/or installed, the designer/installer shall have the appropriate skills and knowledge of the product and access to all IBS Acoustic Slat Panels technical information.

Visit www.ibs.co.nz for more information.

2.2 Health and Safety

When installing IBS Acoustic Slat Panels take all steps to ensure your safety and the safety of others;

- Ensure that when cutting or drilling IBS Acoustic Slat Panels that there is adequate ventilation or mechanical dust extraction
- Ensure IBS Acoustic Slat Panels is well supported when cutting or drilling the panel
- Appropriate close fit clothing shall be worn at all times
- Wear eye, ear and footwear protection when working with IBS Acoustic Slat Panels .

Site considerations:

- Selection of the right equipment for working from a height
- Safe working with ladders and stepladders
- Maintain a clear unobstructed work area.

For further information, refer to:

- The Absolutely Essential Health and Safety Toolkit
- Worksafe New Zealand Quick Guide.

2.3 Tools

When installing IBS Acoustic Slat Panels the following tools and fixings are required, but not limited to:

- Hard tipped handsaw
- Skill saw with tungsten tipped blade
- Electric drill with hole saw and high-speed drill bits
- Caulking or Sealant gun
- Masking tape for protection when cutting

2.4 Sawing, Drilling, Shaping

IBS Acoustic Slat Panels panels may be sawn and shaped in the same way as solid wood, although carbide tipped cutters are recommended.

As the panels are to be installed in a visible location, ensure clean-cut edges with sharp tools, using a backing block to minimize break out. The feed rate shall be slower than for solid wood.

Please also take note of the cutting instructions in the installation section of this Design & Installation guide.

2.5 Handling and Storage

Storage and handling in transport is essential for the protection of IBS Acoustic Slat Panels . The following simple principles shall be considered:

- Strapping and shrink wrap shall be removed immediately upon arrival at the installer's storage area or on site.
- IBS Acoustic Slat Panels shall be laid flat on timber bearers. The spacing between the timber shall be no more than 800mm.
- Ensure the storage bearers are in true alignment if several pallets are stacked on top of each other.
- When manually handling IBS Acoustic Slat Panels ensure the panels are lifted in the central third.

2.6 Quality Assurance

IBS recommends that installers record the installation of IBS Acoustic Slat Panels . This may include:

- packing slips to show evidence of delivery
- written notes, and
- meaningful photos.

3. Durability

Below are the following conditions which need to be met; otherwise the durability of IBS Acoustic Slat Panels will be compromised

3.1 Handling & Storage

- Ensure that the panels are handled and stored in a way that minimises potential damage to surface and or edges.
- IBS Acoustic Slat Panels shall be laid flat on timber bearers. The spacing between the timber shall be no more than 800mm.
- Ensure the storage bearers are in true alignment if several pallets are stacked on top of each other.
- When manually handling IBS Acoustic Slat Panels ensure the panels are lifted in the central third.
- IBS Acoustic Slat Panels should be kept indoors to avoid damage.
- Avoid Storing near fires or hot surfaces.
- If not installing immediately, cover the panels to protect them from damage.
- Inspect the IBS Acoustic Slat Panels prior to installation for any defects or damage.

3.2 Prohibited Uses

- Do not use IBS Acoustic Slat Panels in areas where the panels may get wet or damaged by moisture
- Do not use IBS Acoustic Slat Panels in areas where flames are present, such as fireplaces, or cooking spaces.

3.3 Defects

Before Installation, please ensure you check the panels for defects or damage.

3.4 Differing Installation

To ensure the warranty on the product remains valid, it is crucial to follow the design and installation guidelines provided. Failure to adhere to these instructions may result in the warranty being voided

4. Installation

4.1 Cutting

To reduce chipping or damaging the face veneers on the panels, please adhere to the instructions below.

1. Begin by cutting the panels on the side with slats.
2. First, mark your intended cut line with a pencil (avoid using pens or permanent markers).
3. After marking, apply a strip of 25mm wide masking tape from one end of the cut line to the other.
4. Make sure the masking tape adheres to every part of the wooden slats.
5. Re-mark the line where you plan to cut onto the tape.
6. For cutting, use only a fine-toothed saw or a circular saw.
7. Move the saw gently to prevent damaging the edges of the wooden slats.
8. If you're using a circular saw, secure a straight edge to the panel to achieve a neat and straight cut.

* IBS recommend using a vacuum for dust control when cutting



4.2 Installation

Before Installation, please ensure you check the panels for defects or damage.

Once you have cut you panel to size it's easy to install.

1. Position the panel with the batten side facing downwards on a cushioned surface to prevent any damage to the wood slats.
2. Use a high-quality construction adhesive as indicated in the accompanying table (Section 4.5)
 - a. Adhere to the glue manufacturer's guidelines for drying times before attaching the panel to the wall.
3. Secure the panel to the wall using both adhesive and and screws
 - a. Adhesive Application Directly on the Panel: Affix the panel to the wall using construction or grab adhesive.
 - b. Wall Stud Screwing: Fasten the panels directly into the wall studs through the acoustic felt
 - c. IBS suggests using black screws to make the fixings less visible.

Note: Always Glue and Screws for the following applications.

1. Where panels are stacked on top of other panels to achieve more height on a wall, they must be glued, and screw fixed to the wall.
2. Where panels are fixed to ceilings must also be glued, and screw fixed to the ceiling.

Caution: Fixing panels to ceilings requires more than one person as well as a safe platform on which to stand while installing. Please ensure the area is safe prior to installing the panels.

4.3 Fixing

- Use black 8g x 40mm Button Head Panels wood screw, fixed at 300mm centres across the width of the panel and 600mm centres along the length of the panels.
- Fix screws through the black felt.
- Do not use countersunk head screws as these will not provide the holding required to secure the felt.

4.4 Fixing Spacing

Minimum Fastener Spacing from Board's Edge	
	Screws
Min fixing distance from board's top and bottom edge	25 mm

4.5 Type of Fasteners/Adhesive Options

	Minimum Size (mm)	Fixing Centres (mm)	
		Centres length	Centres width
Black Button Head Panels Wood Screw	40	600	300

Adhesives	
Sikaflex®-123 MS Bond	Apply beads evenly spaced between throughout the sheets. *Installation must follow manufacturers install guide for all adhesives.
Holdfast - Gorilla Grip	
Bostik - Alpha Grip	
Selleys - Liquid Nails	

4.6 Differing Installation

To ensure the warranty on the product remains valid, it is crucial to follow the design and installation guidelines provided. Failure to adhere to these instructions may result in the warranty being voided

5. Finishing

5.1 Finishing of the Panel

IBS Acoustic Slat Panels require no staining or painting. Simply wipe down the surfaces using a damp soft cloth. If the surfaces require cleaning, use a mild detergent to wipe down and allow to dry.

6. Care, Maintenance & Warranty

6.1 Maintaining your panels after installation

- IBS Acoustic Slat Panels require very little maintenance.
- Keep clean by wiping down the surfaces when they are dirty, or when dust builds on the panels.
- To remove any dust build on the felt backing, use a soft brush, or soft brush attachment on your vacuum cleaner.
- When using a vacuum cleaner, take extra care to ensure the hard edges of the vacuum pipe or fittings do not damage the edge of the wooden slats.
- We trust you will enjoy your new modern living space!

7. Technical Properties

7.1 Acoustic

In acoustics testing, an Absorption class D refers to a specific classification of materials based on their sound absorption properties. This classification is part of a standardised system used to rate the effectiveness of materials in absorbing sound. The classes range from A to E, with A being the most effective and E being the least effective. Class D materials have moderate sound absorption capabilities, meaning they can absorb a fair amount of sound but are not as effective as Class A or B materials.

Acoustics Information	
Absorption Class D	0.03MH

8. Additional Resources

8.1 Additional Information

For additional information of IBS Acoustic Slat Panels refer to:

- IBS Maintenance and Warranty of IBS Acoustic Slat Panels
- www.ibs.co.nz
- 0800 367 759

9. Limitations

The information contained in this document is current as at September 2024 and is based on data available to IBS Sustainable Building Products at the current time.

All photographic images are intended to provide a general impression only and shall not be relied upon as an accurate example of IBS Acoustic Slat Panel products installed in accordance with this document.

IBS reserves the right to change the information contained in this document without prior notice. It is your responsibility to ensure that you have the most up to date information available, including at the time of applying for a building consent. You can call 0800 367 759 or visit www.ibs.co.nz to obtain current information.

IBS has used all reasonable endeavours to ensure the accuracy and reliability of the information contained in this document. However, to the maximum extent permitted by law, IBS assumes no responsibility or liability for any inaccuracies, omissions, or errors in this information nor for any actions taken in reliance on this information.

10. Frequently Asked Questions

Q. Has this product been tested for acoustics?

A. Yes, the information relating to this is in section 7.

Q. Do I need install all the Panels in the same direction?

A. No, you can have creative freedom on laying the Panels with what ever direction you deem fit.

Q. Can I install this product in my bathroom or wet area?

A. No, IBS does not allow for installation in wet areas.

Q. Can I install this product in next to my fire place?

A. No, IBS does not allow for installation near fireplaces.

11. Installation checklist

The below installation areas are considered critical to the successful installation of IBS Acoustic Slat Panels . Using this sheet as a checklist during installation will aid in problem free product installation and long term product durability post installation.

Task	X when checked
Prior to Specification and Installation	
Read the IBS Acoustic Slat Panels Installation Guide & have a hard copy on site	<input type="checkbox"/>
Health and Safety	
Take all steps to ensure your safety and the safety of others (adequate ventilation and protection)	<input type="checkbox"/>
Ensure IBS Acoustic Slat Panels are well supported when cutting or drilling the panel	<input type="checkbox"/>
Install	
IBS Acoustic Slat Panels with the timber slats facing outwards	<input type="checkbox"/>
Ensure clean-cut edges with sharp tools, masking tape the cut as well as using a backing block to minimize break out	<input type="checkbox"/>
Use an approved adhesive and Installation followed as per manufacturers install guide-lines	<input type="checkbox"/>
Ensure fixings are accordance with what is specified within this installation Guide.	<input type="checkbox"/>
Enusre you have glued and Screwed in accordance with what is specified within this installation Guide.	
Installation must be in accordance with the instructions in the IBS Acoustic Slat Panels Installation Guide.	<input type="checkbox"/>
Handling and Storage	
Ensure correct storage and handling in transport for the protection of IBS Acoustic Slat Panels	<input type="checkbox"/>



Design & Installation Guide

IBS Acoustic Slat Panels



3 Zelanian Drive,
East Tamaki, Auckland,
New Zealand 2013
For general enquires:
Phone: 0800 367 759

Scan the QR code to
view all RigidRAP®
documents.

☎ 0800 367 759

✉ info@ibs.co.nz

🌐 www.ibs.co.nz