



Recommended Adhesives and Sealants Guide

August 2021
0800 367 759 | www.ibs.co.nz

Contact our team

If you'd like to contact our team with any questions or sales enquiries, reach us with the details below:

1/7 Fraser Road, Panmure, Auckland, New Zealand

0800 367 759

sales@ibs.co.nz

www.ibs.co.nz

The recommendations in this adhesive and sealant guide have been tested and approved by the distributors of these adhesives and sealants.

You should read all of the instructions on the adhesive or sealant packaging prior to using them.

For more information regarding these adhesives or sealants, please contact the distributor directly on the following numbers.

Sika: 0800 745 269

Soudal: (07) 847 5540 or 0800 70 10 80

Bostik: 0508 222 777

NZBN 9429000097253

Recommended Sika adhesives and sealants for IBS products



Visit nzl.sika.com for more information on products.

Product Range		Sika Adhesives and Sealants					
		Nailbond® Premium	Nailbond® PB	Nailbond® Fast	Nailbond® SB Original	Sika® Aktivator-205	Sikasil® NG Sealant
OSB	EUROLine	+	+	+			
	EUROFloor	+	+	+			
Fibre Cement	PRIMAflex	+					
	PRIMAaqua	+					
	PRIMAalpha Groove	+					
	PRIMActu	+					
	KalsiFlex	+					
	KalsiWAB	+					
	KalsiGroove	+					
	KalsiCTU	+					
Plywood	CD Structural Ply	+					
	Builders Grade Ply	+					
	PlyFloor	+					
	V-Groove Ply	+					
	Formply	+					
Other Panels	Softboard		+	+	+		
	MDF PanelLine V-Groove			+	+		
	MDF						
	Hardboard	+		+	+		
	Hardboard Underlay						
	Hardboard Pegboard						
	Showerline	+				+	+

Nailbond® Premium

Fast curing, one component polyurethane wallboard and general construction adhesive.

Nailbond® PB

Nailbond® PB is a solvent based gun grade adhesive for bonding wallboards, panelling and wall linings to a variety of substrates.

Nailbond® Fast

Nailbond® Fast is a premium, water based, multi purpose construction adhesive with strong initial grab and high bond strength.

Nailbond® SB Original

Nailbond® SB Original is a flexible, extreme strength, no drip, no slump, easy to use gap filling heavy duty construction adhesive.

Sika® Aktivator-205

Transparent solvent-based adhesion promoter for non porous substrates.

Sikasil® NG

Specialist grade silicone sealant with superior mould resistance and unique adhesion to bathroom acrylic plastics.

Recommended Soudal adhesives and sealants for IBS products



		Gorilla Grip (1 hr or 2 hr cure)	Gorilla PRO Expanding Foam	Soudaseal 240FC	Gorilla 940FC	Gorilla Plumbers Silicone	Gorilla Roofers Silicone	Gorilla Fix All High Tack	Gorilla Glue	Holdfast SB Power	Holdfast NailPower Construction	Gorilla Wallboard Adhesive	Gorilla PVA Aliphatic	Gator MS Sealant	Metalex Ready to Use	Metalex Timber Preservative	
Product Range	OSB																
	EUROLine*	+	+	+													
	EUROFloor*	+	+	+													
	Fibre Cement																
	PRIMAflex			+	+												
	PRIMAaqua			+	+		+										
	PRIMAalpha Groove			+	+		+										
	PRIMAactu								+	+							
	KalsiFlex			+	+												
	KalsiWAB			+	+		+										
	KalsiGroove			+	+		+										
	KalsiCTU								+	+							
	Plywood																
	CD Structural Ply*	+	+	+	+											+	+
	Builders Grade Ply	+						+			+						
	PlyFloor*	+		+	+												
	V-Groove Ply*	+		+	+			+									
	Formply					+	+										
	Other Panels																
	Softboard									+	+						
	MDF PanelLine V-Groove							+		+		+					
	MDF							+		+		+					
	Hardboard							+		+		+					
	Hardboard Underlay							+		+		+					
	Hardboard Pegboard									+							
	Showerline													+	+		



***Suited Soudal adhesives and sealants for IBS products**

EUROLine	Timber – Gorilla Grip (1 hour or 2 hour cure) Steel – Gorilla 240FC / Gorilla 940FC
EUROFloor	Timber – Gorilla Grip (1 hour or 2 hour cure) Steel – Gorilla 240FC / Gorilla 940FC
CD Structural Ply	For all “Cut Edges” on H3.2 Ply - Metalex Timber Preservative or Metalex Ready to Use Timber – Gorilla Grip (1Hour or 2Hour) / Gorilla PRO Expanding Foam (as an adhesive) Steel – Gorilla 240FC / Gorilla 940FC
PlyFloor	Timber – Gorilla Grip (1 hour or 2 hour cure) Steel – Gorilla 240FC / Gorilla 940FC
V-Groove Ply	Timber – Gorilla Grip (1 hour or 2 hour cure) / Gorilla Glue Steel – Gorilla 240FC / Gorilla 940FC


Please refer to product Technical Data Sheets before use from www.soudal.co.nz.

It should be noted that recommendations given are based on “standard fixing” of the panels. If you require a purely adhesive fix solution (no mechanical fastenings) please contact Soudal on 0800 701 080.

The recommendations are a guide as to what products work best in various scenarios, however for specific suggestions/recommendations to the “site” application, please contact Soudal on 0800 701 080.

Next page notes:

- A: All edges we recommend to glued using the Gorilla Grip (1 Hour or 2 Hour) to provide added strength and a complete water-tight joint.
- B: Only required when using PU based adhesives such as Gorilla Grip, Gorilla Glue, Gorilla PRO Expanding Foam
- C: On all Steel Framing we recommend surface preparation to ensure that there is no issue with surface contaminants
- D: May also be used as an internal lining over an existing “lined” wall structure
- E: Some adhesives require a minimum compressed thickness of 2mm to function correctly.
- F: For priming and sealing of Porous Surfaces when using flexible polyurethane adhesives and sealants
- G: For priming and sealing of Porous Surfaces when using flexible MS polymer/silicone adhesives and sealants

		Surface Preparation (Non-Visual Side)		Soudal Adhesive/Sealant Solutions		
		Will Get the Job Done	Best	Will Get the Job Done	Suited	Ideally Suited
EUROLine	Timber		Light wipe with damp cloth		Holdfast NailPower Construction	Gorilla Grip
	Steel ^B	Gorilla Solvent Cleaner	Gorilla 696 Surface Activator	Gorilla Facade ^E	Gorilla 940FC ^E	Soudaseal 240FC ^E
EUROFloor ^A	Timber				Gorilla PRO Expanding Foam	Gorilla Grip
	Steel ^B	Gorilla Solvent Cleaner	Gorilla 696 Surface Activator	Gorilla Facade ^E	Gorilla 940FC ^E	Soudaseal 240FC ^E
PRIMAflex		Gorilla Primer 100 ^F	Gorilla Primer 150 ^G	Gorilla Facade ^E	Gorilla Fix All High Tack ^E	Soudaseal 240FC ^E Gorilla 940FC ^E
PRIMAaqua						
PRIMAalpha Groove						
PRIMAactu						
KalsiFlex						
KalsiWAB						
KalsiGroove						
KalsiCTU				Holdfast NailPower Construction		
Note: if onto steel framing then wipe down steel framing with either Gorilla Solvent Cleaner or Gorilla 696 Surface Activator						
CD Structural H3.2 Ply	Timber		Light wipe with damp cloth ^B		Holdfast Construction Adhesive	Gorilla Grip
	Steel ^C	Gorilla Solvent Cleaner	Gorilla 696 Surface Activator	Gorilla Facade ^E	Gorilla 940FC ^E	Soudaseal 240FC ^E
Note: All H3.2 Plywood "CUT" needs to be edge treated with either Metalex Timber Preservative or Metalex Ready To Use						
Builders Grade Ply	Timber			Holdfast NailPower Construction	Gorilla PRO Expanding Foam	Gorilla Grip
	Steel ^C	Gorilla Solvent Cleaner	Gorilla 696 Surface Activator	Gorilla Facade ^E	Gorilla MS Sealant ^E	Soudaseal 240FC ^{DE} Gorilla 940FC ^E
V-Groove Ply	Timber		Light wipe with damp cloth ^B	Holdfast NailPower Construction	Gorilla Wallboard Adhesive	Gorilla Grip
	Steel ^C	Gorilla Solvent Cleaner	Gorilla 696 Surface Activator	Holdfast NailPower Construction	Gorilla MS Sealant ^E	Soudaseal 240FC ^{DE} Gorilla 940FC ^E
Formply					Gorilla Roofers Silicone	Gorilla Roofers Silicone
Softboard	Flat Wall			Gorilla Facade ^E	Gorilla Wallboard Adhesive	Holdfast NailPower Construction
MDF				Gorilla Aliphatic PVA	Gorilla Glue	Holdfast NailPower Construction
Hardboard	Timber/ Gypsum				Holdfast NailPower Construction	Gorilla Fix All High Tack ^{DE}
Hardboard Underlay	Timber/ Concrete			Gorilla Grip	Holdfast NailPower Construction	Gorilla MS Flooring
Hardboard Pegboard	Flat Wall			Gorilla Facade ^E	Gorilla Wallboard Adhesive	Holdfast NailPower Construction
Showerline	Timber / Steel ^C	Gorilla 696 Surface Activator	Gorilla 696 Surface Activator	Gorilla Facade ^{DE}	Gorilla MS Sealant ^{DE}	Gorilla 240FC ^{DE}

Specification for the use of Birch Face Plywood



Scenario – Wall Linings

Purpose

For the bonding of “Birch Face” Plywood lining to Interior Walls. This specification is designed for the securing of the “Birch Face” Plywood product without the need for mechanical fastenings.

Products Required

- Soudaseal 240FC White 600ml Sausage #20098 or Gorilla Fix All High Tack Cartridge #20303
- Holdfast Gator VHB Double Sided Foam Tape 12mm x 2mm x 30m #56665
- Gorilla Primer 150 (for non-porous surfaces)
- Gorilla Solvent Cleaner (steel framing)
- Clean Cloths for application of cleaner
- Mr Gorilla Wipes #46005

Procedure

Step 1

Ensure you read the Product Technical Documents before you begin. If at this point you have any questions, please contact your local Soudal Territory Manager

Step 2

Ensure that the walls that you are working with are straight and flat, use a straight edge for this. Where this is not so, there may be additional stresses on the bonded joints once applied.

Batten placement for walls:

- All Frame/Battens - No greater than 600mm apart, 45mm wide

Step 3

Ensure that the “non-visual side” of the “Birch Face” Plywood has Gorilla Primer 150 applied in the corresponding locations to where the Soudaseal 240FC or Gorilla Fix All High Tack will be applied in continuous beads.

“All Framing” (Steel/Timber) - the Gorilla Solvent Cleaner needs to be wiped/applied along the full length of these to correspond with the adhesive that will be applied.

Leave to dry for a period of 5-10 minutes (longer in colder conditions).

Step 4

Position the tape, full length onto the battens to one side. This allows room for application of the adhesive (Soudaseal 240FC) so that when compressed does not flow over the tape, reducing the potential initial hold of the tape (Gator 2mm Double Sided Foam Tape).

Step 5

Set H-Packers (or similar) along the floor to set your predetermined height for the panel from the floor.

Position 7-8mm continuous beads of adhesive the full length approx. 20-25mm from the applied tape. When the 7-8mm bead of adhesive is compressed to 2mm thick, it is now approx. 15mm wide.

Step 6

Set & press the “Birch Face” Plywood lining into position against the wall. Ensure the panel is set back to the wall, (Note: that the Double-Sided Tape provides the initial bond while the Soudaseal 240FC/Gorilla Fix All High Tack provides the secondary bond. As the adhesive cures the primary bond is taken by Soudaseal 240FC/Gorilla Fix All High Tack).

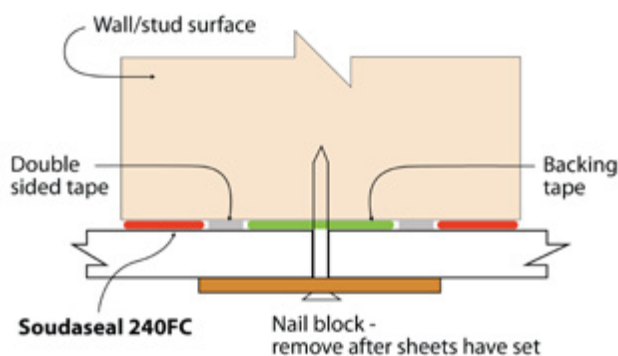
Note: As environmental conditions cool, curing times extend for adhesives & sealants.

Step 7

You want to avoid on getting the adhesive (Soudaseal 240FC/Gorilla Fix All High Tack) on the finished Interior Lining. If you do get the Soudaseal 240FC/Gorilla Fix All High Tack on the visual panel surface, then immediately use the Mr Gorilla Wipes to remove residues. It should be noted that using solvent-based cleaners for this purpose may leave blemishes/blushing to the prefinished surface.

The following points should be noted:

- Lower temperatures will dramatically increase the time required for the adhesive to cure. For further guidance on this please contact Soudal Technical.
- Preparation is critical to success.



If you have any further questions, please do not hesitate to contact Soudal: Ph: 0800 701 080.

Recommended Bostik adhesives and sealants for IBS products



Bostik Ultra NP Primer
Bostik Alpha Grip
Bostik Wallboard Gold
Bostik Gold Ultra
Bostik Expanda Foam
Bostik Simson ISR 70-03
Bostik High Tack
Bostik Tuf As Nails Original
Bostik Tuf As Nails GP
Bostik MS Safe Seal
Bostik Kitchen & Bathroom Silicone
Bostik Roof and Gutter Silicone

Product Range	OSB										
	EUROLine	★	★	★		★					
	EUROFloor	★	★	★		★					
	Fibre Cement										
	PRIMAflex					★					
	PRIMAaqua					★	★				
	PRIMAalpha Groove					★	★				
	PRIMActu							★			
	KalsiFlex					★					
	KalsiWAB					★	★				
KalsiGroove					★	★					
KalsiCTU							★				
Plywood											
CD Structural Ply	★			★	★					★	
Builders Grade Ply	★					★	★				
PlyFloor	★				★						
V-Groove Ply	★				★	★					
Formply											
Other Panels											
Softboard			★	★			★	★			
MDF PanelLine V-Groove				★		★	★	★			
MDF				★		★	★				
Hardboard				★		★	★	★			
Hardboard Underlay				★		★	★				
Hardboard Pegboard							★				
Showerline	★								★	★	